

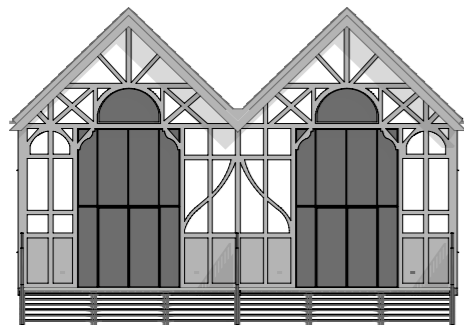
One & Two

3 BEDROOMS | GARDEN | RIVER MOORING

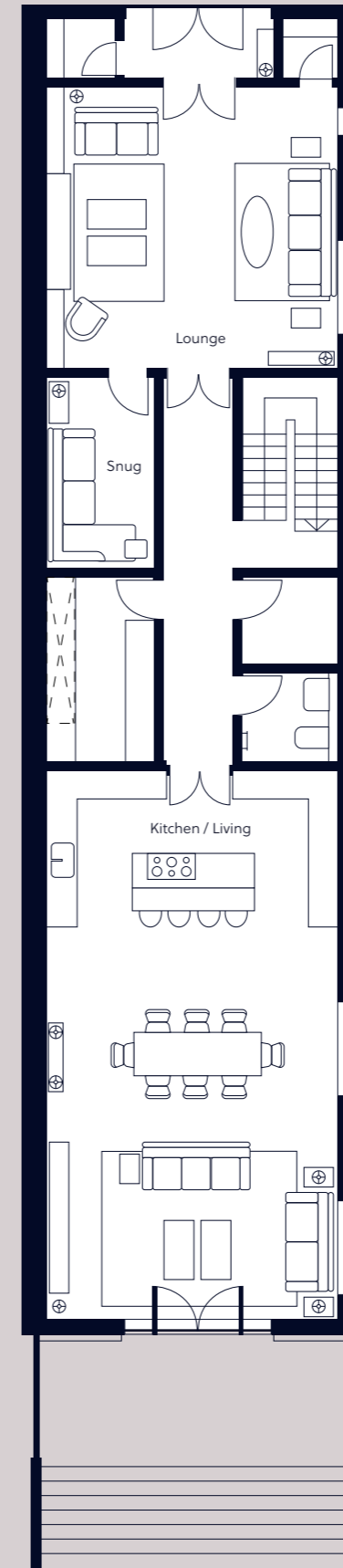
These properties have their own home office space and dressing room on the first floor. Each also has an ensuite to the master bedroom, separate family bathroom and magnificent river views from the internal mezzanine level balcony. Downstairs there is a combined dining and living room, separate kitchen, generous sitting room, utility room, storage room and WC. These properties benefit from double height, floor to ceiling glazing with doors leading to the private terrace, garden and direct access onto your own private mooring.

Master Bedroom	6.0m x 3.9m	19' 8" x 12' 9"
Bedroom Two	3.0m x 7.3m	9' 10" x 23' 11"
Bedroom Three	3.0m x 7.3m	9' 10" x 23' 11"
Kitchen / Living	6.0m x 11.2m	19' 8" x 36' 9"
Lounge	6.0m x 5.8m	19' 8" x 19' 0"
Study	2.2m x 3.8m	7' 3" x 12' 6"

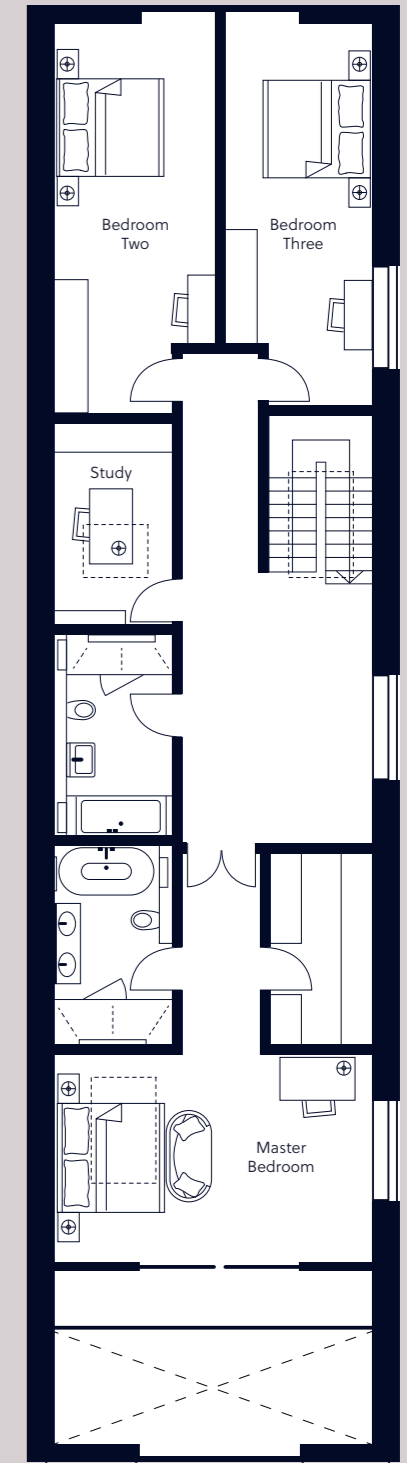
306m² / 3,297ft²



GROUND



FIRST



* Total sizes are approximate. Even-numbered floorplans are a mirror image of their odd-numbered counterpart.