

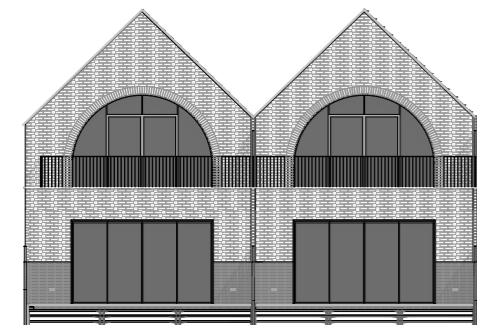
Three & Four

3 BEDROOMS | GARDEN | RIVER MOORING

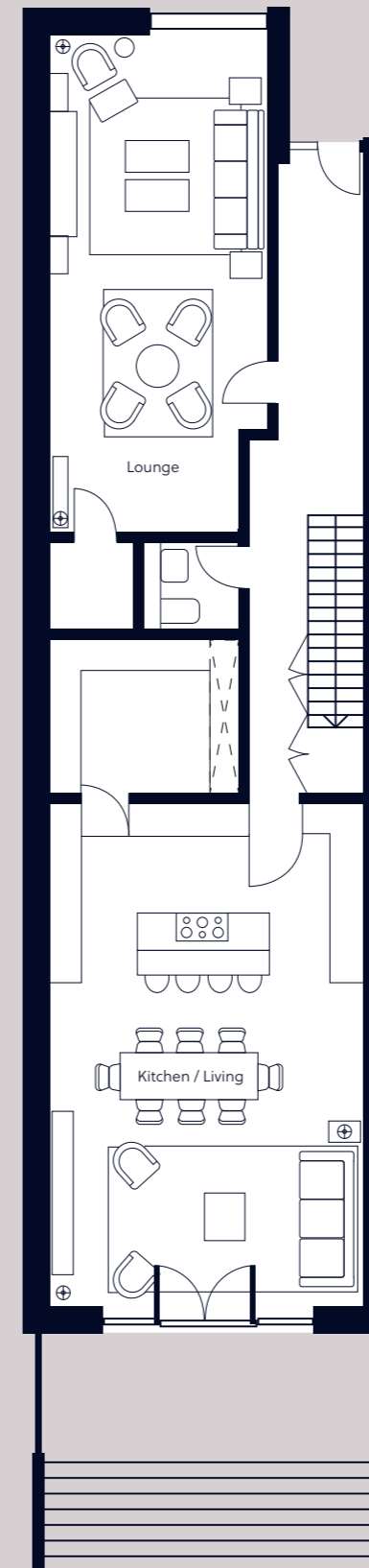
These come with the added bonus of having their own home office on the first floor. Each also has an ensuite to the master bedroom, second ensuite to the guest bedroom, separate family bathroom and magnificent river views from the sun terrace off the master bedroom. Downstairs there is an expansive combined kitchen, dining and living room area with separate generous sitting room, utility room, storage room and WC. Furthermore, they have floor to ceiling doors leading to the private terrace, garden and direct access onto your own private mooring.

Master Bedroom	6.0m x 5.2m	19' 8 x 17' 1
Bedroom Two	2.9m x 7.0m	9' 6 x 22' 12
Bedroom Three	2.9m x 7.0m	9' 6 x 22' 12
Kitchen / Living	6.0m x 8.9m	19' 8 x 29' 2
Lounge	4.1m x 9.5m	13' 5 x 31' 2
Study	3.4m x 2.4m	11' 2 x 7' 10

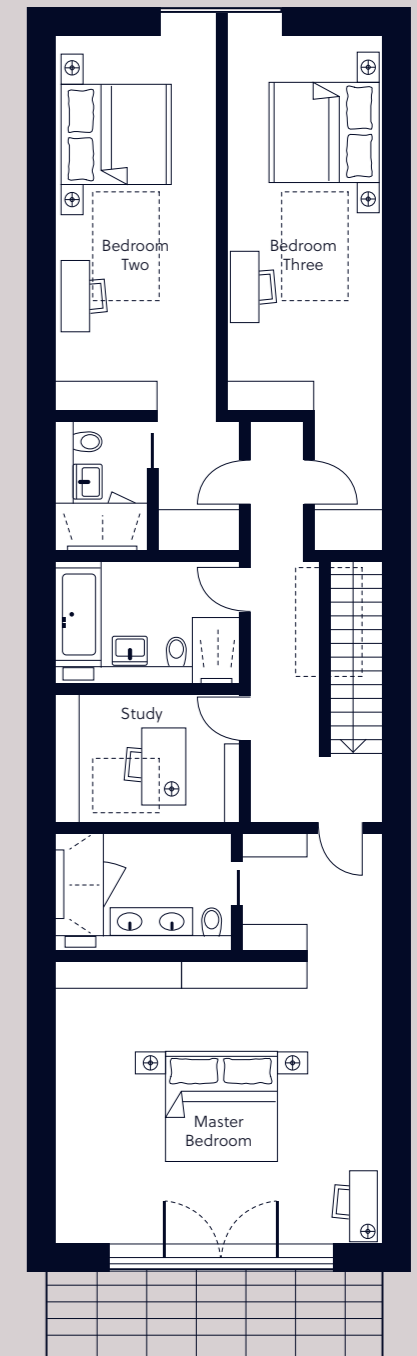
274m² / 2,948ft²



GROUND



FIRST



* Total sizes are approximate. Even-numbered floorplans are a mirror image of their odd-numbered counterpart.